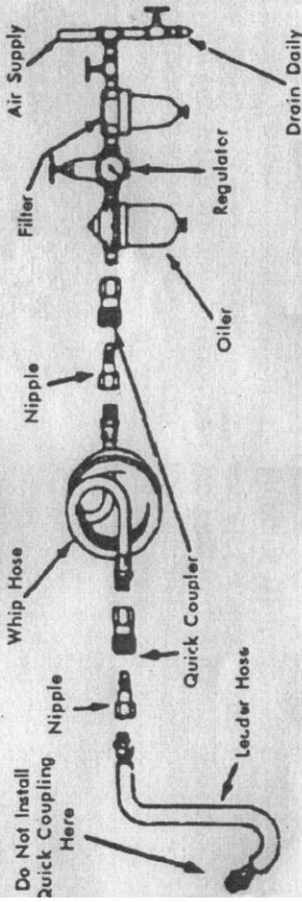


### Air Supply

of this class operate on a wide range of air pressure. It is recommended that air pressure of these tools measures 90 PSI at the tool while running free. Higher pressure clean air will shorten the tool's life because of faster wear and may create a dangerous condition and void the warranty.

in the air line will cause damage to the tool. Drain the air tank daily. Clean the set filter screen on at least a weekly schedule. The recommended hookup diagram can be viewed in the illustration below.



air inlet, used for connecting air supply, has standard 1/4" NPT American Thread.

pressure should be increased to compensate for unusually long air hoses (over 25 Minimum hose diameter should be 3/8" I.D. and fittings should have the same dimensions.

### Operating Instructions

Impact wrench should **never be used to set torque**. Use a torque wrench to set torque. To install nuts, set the regulator to the maximum setting. To install nuts, set the regulator to the minimum to medium setting. Do not over tighten the nuts.

**Warning:** Do not use hand tool sockets (chrome), use impact quality sockets only. Tool sockets (chrome) are glass hard and will shatter and cause serious personal injury if used with air tools.

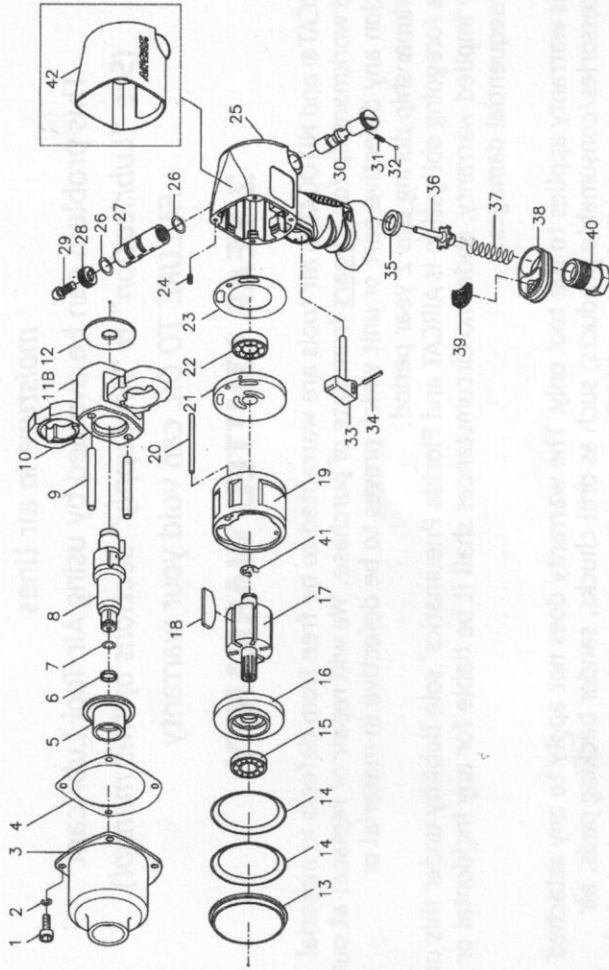
**Warning:** Never trigger the tool when not applied to a work object. Attachments such as socket bars or extensions will reduce the life of the tool, however, if used, must be securely attached. Loose attachments can cause serious injury.

### Maintenance

Factors outside the tool may cause loss of power or erratic action. Reduced compressor output, excessive drain on the air line, moisture or restriction in air pipes, use of hose connections of improper size or poor condition may reduce air flow. Grit or gum deposits in the tool may cut power and may be corrected by cleaning the air strainer and flushing out the tool with gum solvent oil or an equal weight of SAE#10 oil and kerosene. If outside conditions are in order and tool is in warranty, disconnect tool from hose, disassemble tool, replace worm or gear parts, clean, reassemble, and re-lubricate, or take tool to any air tool center. For tools in warranty period, send tool direct to Warranty Center. You must send in your warranty card for warranty service.

**AIRCAT**  
PNEUMATIC TOOLS

1/2" Twin Hammer Impact Wrench, 2" anvil  
Model # 1460-XL-2 Polish / Black Clutch



Ref. No.	Part No.	Description	Qty /Tool	Ref. No.	Part No.	Description	Qty /Tool
1	00-0104	Cap Screw	4	22	00-2305D	Ball Bearing	1
2	00-1806	Spring Washer	4	23	303R-020	Rear Gasket	1
3	303R-002	Hammer Case	1	24	00-4311	Insert Recoil	4
4	303R-019B	Front Gasket	1	25	303D-001A1	Motor Housing	1
5	305F-XI-010	Anvil Bushing	1	26	00-41108	O-Ring	2
6	SC800-07	Anvil Collar	1	27	303-022	Valve Sleeve	1
7	SC800-08	O-Ring	1	28	303-021B	Regulator Knob	1
8	305V-011NA4	Anvil	1	29	00-1319	Cap Screw	1
	305V-011NB4	2" Anvil	1	30	303-023	Reverse Valve	1
9	SC800-10	Hammer Pin	2	31	303-032	Spring	1
10	305V-017	Hammer	2	32	SC100-15	Steel Ball	1
11	305V-012	Hammer Cage	1	33	303D-024	Trigger	1
12	SC800-13	Rear Washer	1	34	SC800-33	Spring Pin	1
13	303D-025	Hammer Case Pilot	1	35	SC200-30	Bushing	1
14	303-026	Motor Clamp Washer	2	36	SC200-31	Valve Stem	1
15	00-2317D	Ball Bearing	1	37	306-028-B	Spring	1
16	SC802-05	Front End Plate	1	38	305-021	Exhaust Deflector	1
17	303D-SR-007	Rotor	1	39	303D-SR-027	Muffler	1
18	305H-008D	Rotor Blade	6	40	242-024C	Air Inlet (1/4" NPT)	1
19	305-006-B	Cylinder	1	41	SC200-25	Snap Ring	1
20	SC802-06	Pin	1	42	303D-022	Housing Cover(Optional)	1
21	SC800-23	Rear End Plate	1				