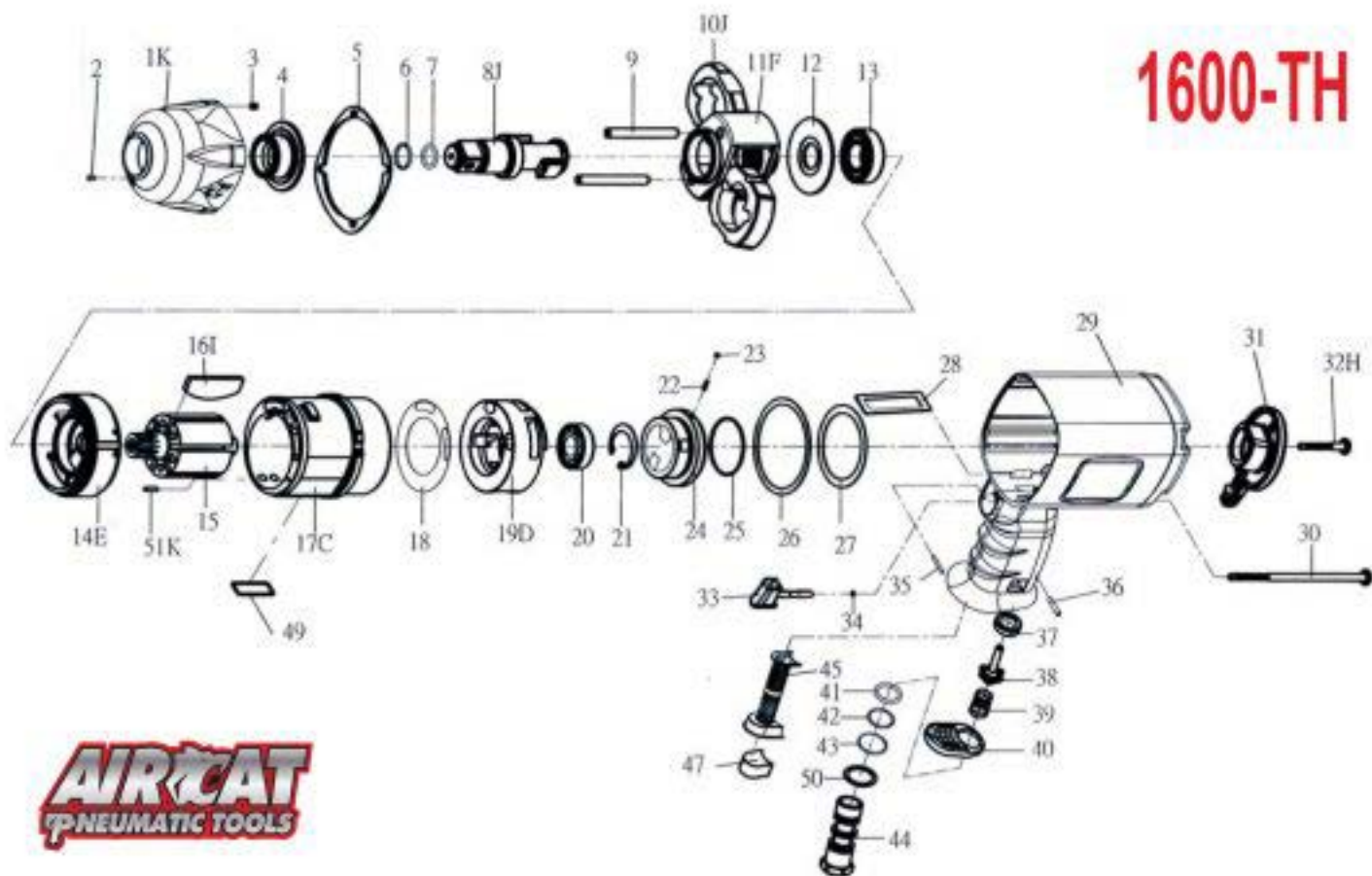


3/4" PROFESSIONAL AIR IMPACT WRENCH

1600-TH



AIRCAT
PNEUMATIC TOOLS

Index No.	Part No.	Description	Q'ty	Index No.	Part No.	Description	Q'ty
1K	278J-002B	Hammer Case	1	26	278F-030	Rear Gasket	1
2	00-4603	Grease Fitting	1	27	278F-031	Washer	1
3	00-4306	Inserts Recoil	4	28	278F-019	Air Channel Gasket	1
4	278F-010	Anvil Bushing	1	29	278J-001	Motor Housing	1
5	278F-020	Front Gasket	1	30	278F-028	Screw	4
6	280-028	Anvil Collar	1	31	278J-022	Regulator Knob	1
7	00-4175	O-Ring	1	32H	00-6202	Cap Screw	1
8J	278J-011A6	Anvil	1	33	278H-024	Trigger	1
9	285C-016	Hammer Pin	2	34	00-4101	O-Ring	1
10J	278J-017B	Hammer	2	35	00-3351	Spring Pin	1
11F	278D-012	Hammer Cage	1	36	00-3308	Spring Pin	1
12	278-019-B	Rear Washer	1	37	306-027-B	Bushing	1
13	00-2325	Ball Bearing	1	38	306-026	Valve Stem	1
14E	278F-005	Front End Plate	1	39	278H-026	Spring	1
15	278F-007	Rotor	1	40	278H-021	Exhaust Deflector	1
16I	278H-008D	Rotor Blade	6	41	00-4126	O-Ring	1
17C	278F-006B	Cylinder	1	42	00-4143	O-Ring	1
18	278F-033	Valve Sleeve Gasket	1	43	00-4127	O-Ring	1
19D	278F-029	Valve Sleeve	1	44	278F-025C	Air Inlet(3/8" NPT-18)	1
20	00-2304	Ball Bearing	1	45	278H-019	Exhaust Tube	1
21	00-3111	Snap Ring	1	47	278H-028	Non Woven	1
22	305F-034	Spring	1	49	278F-041	Square Ring	1
23	00-3805	Steel Ball	1	50	305F-032	Washer	1
24	278J-021	Reverse Valve	1	51K	00-3435	Pin	1
25	00-4179	O-Ring	1				